

WILKERSON®

Englewood, CO 80110

Installation & Service Instructions:
83-962-000

12 Series Right Angle Bracket

ISSUED: November, 2001
Supersedes: None

EN# 01085520, Rev.1

WARNING

To avoid unpredictable system behavior that can cause personal injury and property damage:

- Disconnect electrical supply (when necessary) before installation, servicing, or conversion.
- Disconnect air supply and depressurize all air lines connected to this product before installation, servicing, or conversion.
- Operate within the manufacturer's specified pressure, temperature, and other conditions listed in these instructions.
- Medium must be moisture-free if ambient temperature is below freezing.
- Service according to procedures listed in these instructions.
- Installation, service, and conversion of these products must be performed by knowledgeable personnel who understand how pneumatic products are to be applied.
- After installation, servicing, or conversion, air and electrical supplies (when necessary) should be connected and the product tested for proper function and leakage. If audible leakage is present, or the product does not operate properly, do not put into use.
- Warnings and specifications on the product should not be covered by paint, etc. If masking is not possible, contact your local representative for replacement labels.

Introduction:

Follow these instructions when installing, operating, or servicing the product.

Application Limits

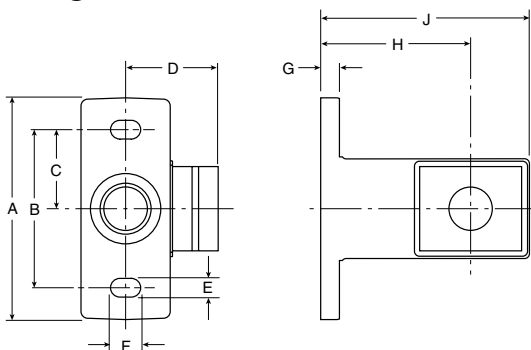
These products are intended for use in general purpose compressed air systems only.

Operating Pressure:	kPa	PSIG	bar
Maximum Inlet Pressure:			
Metal Bowl	1734	250	17.3
Poly Bowl	1024	150	10.2

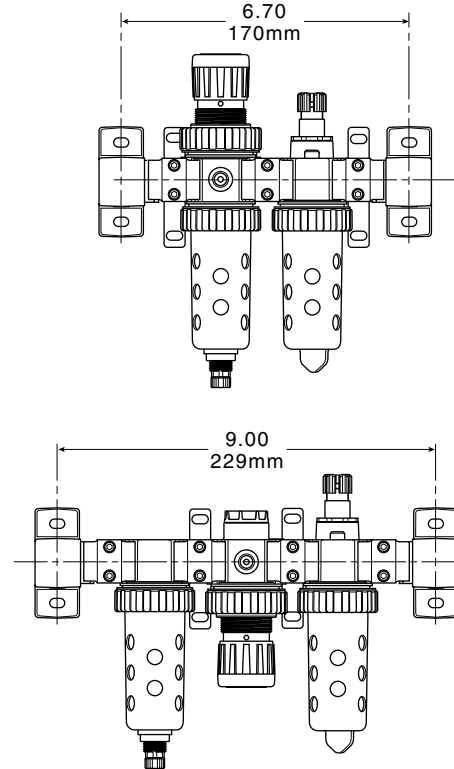
Operating Temperature:

Maximum Temperature (Metal Bowl)	80°C (175°F)
Maximum Temperature (Poly Bowl)	52°C (125°F)
Minimum Temperature	0°C (32°F)

Right Angle Bracket Dimensions



A	B	C	D	E	F	G	H	J
2.83	2.28	1.14	1.16	.28	.43	.28	1.49	2.31
72.0 mm	58.0 mm	29.0 mm	29.5 mm	7.0 mm	11.0 mm	7.0 mm	37.8 mm	58.8 mm



Installation

The right angle bracket can be installed using the two methods outlined on reverse side. Keep pipe or tubing lengths to a minimum with inside clean and free of dirt and chips. Pipe joint compound should be used sparingly and applied only to the male pipe - never the female port. Do not use PTFE tape to seal pipe joints - pieces have a tendency to break off and lodge inside the unit, possibly causing malfunction.

WARNING

FAILURE OR IMPROPER SELECTION OR IMPROPER USE OF THE PRODUCTS AND/OR SYSTEMS DESCRIBED HEREIN OR RELATED ITEMS CAN CAUSE DEATH, PERSONAL INJURY AND PROPERTY DAMAGE.

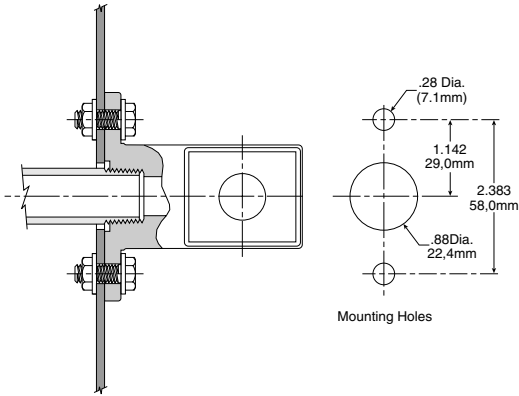
This document and other information from The Company, its subsidiaries and authorized distributors provide product and/or system options for further investigation by users having technical expertise. It is important that you analyze all aspects of your application, including consequences of any failure and review the information concerning the product or systems in the current product catalog. Due to the variety of operating conditions and applications for these products or systems, the user, through its own analysis and testing, is solely responsible for making the final selection of the products and systems and assuring that all performance, safety and warning requirements of the application are met.

The products described herein, including without limitation, product features, specifications, designs, availability and pricing, are subject to change by The Company and its subsidiaries at any time without notice.

EXTRA COPIES OF THESE INSTRUCTIONS ARE AVAILABLE FOR INCLUSION IN EQUIPMENT / MAINTENANCE MANUALS THAT UTILIZE THESE PRODUCTS. CONTACT YOUR LOCAL REPRESENTATIVE.

Direct Piped Method

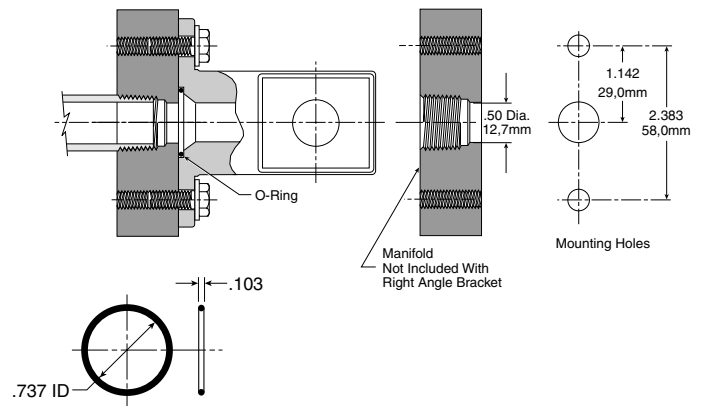
The direct piped method is used when the right angle bracket is bolted to the user's machine and the inlet and outlet pipe is screwed directly into the back of the ninety degree bracket. A through hole must be provided in the user's machine to allow access for the inlet and outlet pipe.



Direct Pipe Ported Method

Manifold Method

This method is used when the right angle bracket is mounted to the user's manifold. The inlet and outlet pipe is screwed into the manifold. An o-ring is used to seal between the bracket and manifold.



Manifold Mounting Method