

WILKERSON®

Richland, MI 49083

Tel: (269) 629-5000

Installation & Service Instructions
83-159-000

Lubricator Model L30 with
Variations and Accessories

ISSUED: December, 2004
Supersedes: August, 2002

Doc.# 83-159-000, Rev. 2

⚠ WARNING

To avoid unpredictable system behavior that can cause personal injury and property damage:

- Disconnect electrical supply (when necessary) before installation, servicing, or conversion.
- Disconnect air supply and depressurize all air lines connected to this product before installation, servicing, or conversion.
- Operate within the manufacturer's specified pressure, temperature, and other conditions listed in these instructions.
- Medium must be moisture-free if ambient temperature is below freezing.
- Service according to procedures listed in these instructions.
- Installation, service, and conversion of these products must be performed by knowledgeable personnel who understand how pneumatic products are to be applied.
- After installation, servicing, or conversion, air and electrical supplies (when necessary) should be connected and the product tested for proper function and leakage. If audible leakage is present, or the product does not operate properly, do not put into use.
- Warnings and specifications on the product should not be covered by paint, etc. If masking is not possible, contact your local representative for replacement labels.

INSTALLATION

1. Refer to WARNING.
2. Install as close as possible to the equipment which is being lubricated.
3. Install the unit with the air flowing through the body in the direction indicated.
4. Install a unit with the same pipe size as the line in use.
5. The lubricator may be filled under pressure by removing the fill plug and pouring the oil into the bowl through the fill port. The bowl may be taken off after the fill plug is removed if a more rapid fill is required. Do not replace the fill plug until the bowl is in position and the clamp ring is securely locked in place.
NOTE: As the fill plug is removed, the air pressure in the bowl will be released.
6. Use clean oil, preferably SAE 10 or lighter weight. The rate of oil delivery may be controlled by turning the adjusting screw counterclockwise for more and clockwise for less oil delivered. This L30 lubricator delivers all the oil downstream that passes through the sight dome. The oil delivery rate will change automatically to deliver more oil during higher airflows and less oil for airflows lower than the one at which the setting was made.

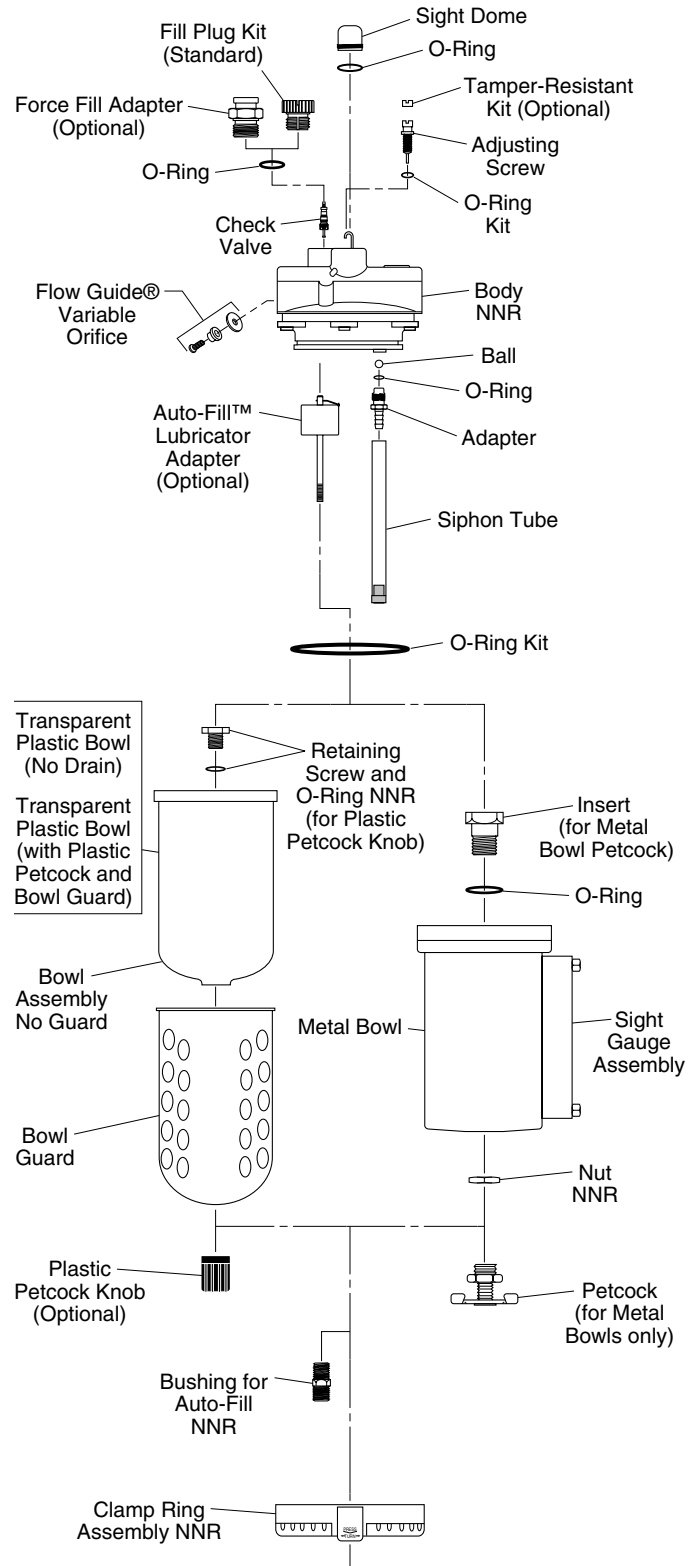
⚠ CAUTION

Polycarbonate bowls, being transparent and tough, are ideal for use with Filters and Lubricators. They are suitable for use in normal industrial environments, but should not be located in areas where they could be subjected to direct sunlight, an impact blow, nor temperatures outside of the rated range. As with most plastics, some chemicals can cause damage. Polycarbonate bowls should not be exposed to chlorinated hydrocarbons, ketones, esters and certain alcohols. They should not be used in air systems where compressors are lubricated with fire-resistant fluids such as phosphate ester and di-ester types.

Metal bowls are recommended where ambient and/or media conditions are not compatible with polycarbonate bowls. Metal bowls resist the action of most such solvents, but should not be used where strong acids or bases are present or in salt laden atmospheres. Consult the factory for specific recommendations where these conditions exist.

TO CLEAN POLYCARBONATE BOWLS USE MILD SOAP AND WATER ONLY! DO NOT use cleansing agents such as acetone, benzene, carbon tetrachloride, gasoline, toluene, etc., which are damaging to this plastic.

Bowl guards are recommended for added protection of polycarbonate bowls where chemical attack may occur.



NNR-NOT NORMALLY REPLACED

MAINTENANCE

1. The lubricator should remain trouble-free given clean operating conditions. Contaminants from dirty oil can collect on bottom of bowl or on siphon tube inlet filter. After tapping filter or bowl on a hard surface, use an air gun to blow out residual dirt.
2. IF OIL DELIVERY RATE DROPS, clean lubricator. Shut off air supply and reduce pressure inside lubricator to zero. Remove Flow-Guide® variable orifice screw and clean its passage with a small wire. Check orifice screw's bore for contaminants and clean it if necessary. Be sure that passage downward from sight dome cavity into Flow-Guide® variable orifice post is open. Remove adjusting screw, clean needle and seat in body. Inspect and clean passage from needle seat to siphon tube adapter.
3. Drain off contaminants that collect in bottom of bowl.

REPAIR KITS AND REPLACEMENT PARTS

O-Ring Repair Kit	LRP-95-058
Liquid Level Switch Kit	LRP-95-093
Bowl Assembly — No Guard	LRP-96-160
Plastic Petcock Kit	LRP-95-181
Siphon Tube Assembly Kit	LRP-96-182
Flow-Guide® Variable Orifice Kit (3/4" Models)	LRP-95-189
Flow-Guide® Variable Orifice Kit (1" Models)	LRP-95-190
Sight Dome Kit	LRP-95-249
Fill Plug Kit	LRP-95-253
O-Ring Kit for Adjusting Screw	GRP-95-255
Bowl O-Ring Kit	GRP-95-256
Force-Fill Adapter	GRP-96-394
Clamp Ring Assembly	GRP-96-404
Tamper-Resistant Kit	LRP-95-587
Metal Gauge Bowl with Petcock	GRP-95-676
Sight Gauge Kit	LRP-95-771
Bowl Guard	GRP-95-808
Plastic Bowl with Plastic Petcock and Bowl Guard	LRP-95-830
Plastic Bowl — No Drain	LRP-96-940
Auto-Fill™ Lubricator Adapter (includes plastic bowl assembly)	LRP-95-698
Check Ball and O-ring Kit	LRP-95-310

WARNING

FAILURE OR IMPROPER SELECTION OR IMPROPER USE OF THE PRODUCTS AND/OR SYSTEMS DESCRIBED HEREIN OR RELATED ITEMS CAN CAUSE DEATH, PERSONAL INJURY AND PROPERTY DAMAGE.

This document and other information from The Company, its subsidiaries and authorized distributors provide product and/or system options for further investigation by users having technical expertise. It is important that you analyze all aspects of your application, including consequences of any failure and review the information concerning the product or systems in the current product catalog. Due to the variety of operating conditions and applications for these products or systems, the user, through its own analysis and testing, is solely responsible for making the final selection of the products and systems and assuring that all performance, safety and warning requirements of the application are met.

The products described herein, including without limitation, product features, specifications, designs, availability and pricing, are subject to change by The Company and its subsidiaries at any time without notice.

EXTRA COPIES OF THESE INSTRUCTIONS ARE AVAILABLE FOR INCLUSION IN EQUIPMENT / MAINTENANCE MANUALS THAT UTILIZE THESE PRODUCTS. CONTACT YOUR LOCAL REPRESENTATIVE.