

# WILKERSON®

Richland, MI 49083

Tel: (269) 629-5000

Installation & Service Instructions  
83-063-000

Precision Air Pressure Regulator P16A  
with Variations and Accessories

ISSUED: April, 2006

Supersedes: July, 2004

Doc.# 83063000, ECN# 060299, Rev. 4

## WARNING

To avoid unpredictable system behavior that can cause personal injury and property damage:

- Disconnect electrical supply (when necessary) before installation, servicing, or conversion.
- Disconnect air supply and depressurize all air lines connected to this product before installation, servicing, or conversion.
- Operate within the manufacturer's specified pressure, temperature, and other conditions listed in these instructions.
- Medium must be moisture-free if ambient temperature is below freezing.
- Service according to procedures listed in these instructions.
- Installation, service, and conversion of these products must be performed by knowledgeable personnel who understand how pneumatic products are to be applied.
- After installation, servicing, or conversion, air and electrical supplies (when necessary) should be connected and the product tested for proper function and leakage. If audible leakage is present, or the product does not operate properly, do not put into use.
- Warnings and specifications on the product should not be covered by paint, etc. If masking is not possible, contact your local representative for replacement labels.

## Introduction

Follow these instructions when installing, operating, or servicing the product.

## Application Limits

These products are intended for use in general purpose compressed air systems only.

## WARNING

**Product rupture can cause serious injury.  
Do not connect regulator to bottled gas.  
Do not exceed maximum primary pressure rating.**

## Installation

1. Install the Regulator as close as possible to the application.
2. Install the unit with the air flowing through the body in the direction indicated by the arrow.
3. Gauge ports (1/4") are provided in either side of the regulator body for installation of a gauge or use as an additional outlet port. Plug unused port(s). System piping should be same size as regulator porting. In systems with a cyclic demand, the regulator should be located upstream of cycling device.

## Operation

Maximum pressure rating is 300 psig (21 bar). Temperature range is 32°F to 150°F (0°C to 65.5°C).

1. Before turning on the supply air pressure, turn the regulator adjusting knob counterclockwise until there is no load on the regulating spring.

2. Turn on the supply air pressure and then turn the adjusting knob clockwise until the desired secondary pressure is reached.
3. To avoid minor readjustment after making a change in pressure setting, always approach the desired pressure from a lower pressure.
4. When reducing from a higher to a lower setting, first reduce to some pressure less than that desired and then increase to the desired pressure.

## Maintenance

1. The regulator can be disassembled for servicing without removal from line.
2. Occasionally remove bottom plug and clean plug, body and valve seat.
3. TO DISASSEMBLE — shut off air to regulator and vent air line on both sides of regulator. Turn adjusting knob counterclockwise to relieve compression on spring. Remove the knob cover cap, screws, cover and spring. Diaphragm assembly can now be removed. By removing bottom plug and spring the valve stem can be removed from the bottom of the regulator.
4. IF UNIT WILL NOT REGULATE TO DESIRED PRESSURE or if pressure becomes excessive - remove bottom plug, spring, and valve assembly. Clean all parts and check valve seat for wear or damage. Replace worn or damaged parts.
5. If excessive air leaks continuously from relief hole, the regulator should be taken out of service and a recommended repair kit installed, as listed under Repair Kits and Replacement Parts.
6. WHEN REPLACING DIAPHRAGM ASSEMBLY — The PRP-95-960 diaphragm assembly is a relieving-type diaphragm.

## WARNING

**FAILURE OR IMPROPER SELECTION OR IMPROPER USE OF THE PRODUCTS AND/OR SYSTEMS DESCRIBED HEREIN OR RELATED ITEMS CAN CAUSE DEATH, PERSONAL INJURY AND PROPERTY DAMAGE.**

This document and other information from The Company, its subsidiaries and authorized distributors provide product and/or system options for further investigation by users having technical expertise. It is important that you analyze all aspects of your application, including consequences of any failure and review the information concerning the product or systems in the current product catalog. Due to the variety of operating conditions and applications for these products or systems, the user, through its own analysis and testing, is solely responsible for making the final selection of the products and systems and assuring that all performance, safety and warning requirements of the application are met.

The products described herein, including without limitation, product features, specifications, designs, availability and pricing, are subject to change by The Company and its subsidiaries at any time without notice.

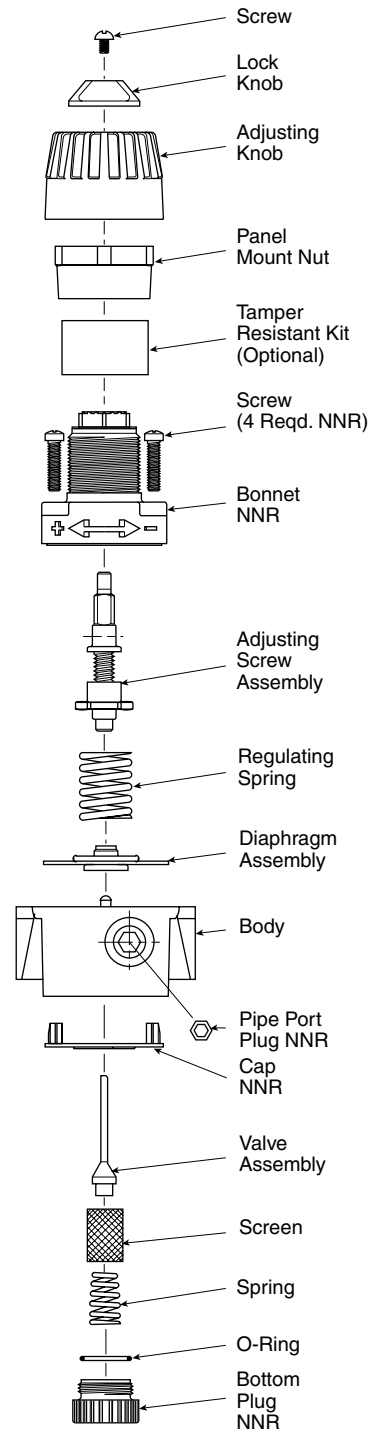
**EXTRA COPIES OF THESE INSTRUCTIONS ARE AVAILABLE FOR INCLUSION IN EQUIPMENT / MAINTENANCE MANUALS THAT UTILIZE THESE PRODUCTS. CONTACT YOUR LOCAL REPRESENTATIVE.**

**Accessories**

Panel Mount Nut .....	GPA-95-032
Wall Mounting Bracket .....	GPA-95-012
Wall Mounting Bracket with Panel Nut.....	GPA-95-011
Tamper Resistant Kit .....	RPA-95-006
Fluorocarbon Valve Assembly .....	PPA-95-067
<b>Gauges:</b>	
0-30 psig .....	K4520N18030
0-60 psig .....	K4520N14060
0-120 psig .....	K4520N14160

**Repair Kits & Replacement Parts**

Self-Relieving Repair Kit (includes self-relieving diaphragm assembly, valve assembly and o-rings) .....	PRP-95-004
<b>Regulating Springs:</b>	
0-30 psi .....	RRP-95-916
0-50 psi .....	RRP-95-222
0-120 psi .....	RRP-95-224
Self-Relieving Diaphragm Kit .....	PRP-95-960
Diaphragm Assembly, Self-relieving - Viton .....	RRP-95-073
Valve Assembly (valve stem and spring) .....	PRP-95-959
Adjusting Knob Assembly .....	RRP-95-023



NNR = Not Normally Replaced