

WILKERSON®

Richland, MI 49083

Tel: (269) 629-5000

Installation & Service Instructions
83-059-000

Regulator Model R16
With Variations and Accessories

ISSUED: April, 2006

Supersedes: September, 1995

Doc.# 83059000, ECN# 060135, Rev. 1

WARNING

To avoid unpredictable system behavior that can cause personal injury and property damage:

- Disconnect electrical supply (when necessary) before installation, servicing, or conversion.
- Disconnect air supply and depressurize all air lines connected to this product before installation, servicing, or conversion.
- Operate within the manufacturer's specified pressure, temperature, and other conditions listed in these instructions.
- Medium must be moisture-free if ambient temperature is below freezing.
- Service according to procedures listed in these instructions.
- Installation, service, and conversion of these products must be performed by knowledgeable personnel who understand how pneumatic products are to be applied.
- After installation, servicing, or conversion, air and electrical supplies (when necessary) should be connected and the product tested for proper function and leakage. If audible leakage is present, or the product does not operate properly, do not put into use.
- Warnings and specifications on the product should not be covered by paint, etc. If masking is not possible, contact your local representative for replacement labels.

INSTALLATION

1. Install as close as possible to where regulated air is needed.
2. Install the unit with the air flowing in the direction indicated by the arrow.
3. Install the same pipe size unit as the pipe line in use. Avoid using fittings, couplings etc., that restrict airflow, unless maximum flow is not needed.
4. Regulator may be installed with the adjusting knob in any position. Attach gauge to one 1/4" female gauge port and plug the other 1/4" female port or use it as a regulated outlet port.
5. Turning the adjusting screw clockwise increases the regulated pressure and turning it counterclockwise decreases the regulated pressure.
6. Panel mount regulators require a 15/16" diameter hole and are mountable on panels from 1/8" to 1/2" thick.
7. Maximum inlet pressure and operating temperature ratings are 300 psig (21 bar) and 175°F (79°C).

MAINTENANCE

1. The regulator can be disassembled for servicing without removal from line.
2. Occasionally remove bottom plug and clean plug, body and valve seat (vent air line on both sides of regulator).
3. TO DISASSEMBLE - shut off air to regulator and vent air line on both sides of regulator. Turn adjusting knob counterclockwise to relieve compression on spring. Remove screw, lock knob, adjusting knob (panel mount nut, if used), tamper-resistant kit (on tamper-resistant models) and cover cap. Remove the four screws, cover and regulating spring. Diaphragm assembly can now be removed. By removing bottom plug and spring the valve stem can be removed from the bottom of the regulator.
4. IF UNIT WILL NOT REGULATE TO PRESSURE NEEDED OR IF PRESSURE BECOMES EXCESSIVE-remove bottom plug, spring, and valve assembly. Clean and check o-ring, valve stem and valve seat for water damaged parts. Install Repair Kit No. RRP-95-130 for self-relieving models and Repair Kit RRP-95-129 for non-relieving models for complete overhaul.

5. IF UNIT LEAKS AT RELIEF PORT, install proper repair kit as listed under Repair Kits and Replacement Parts.
6. WHEN REPLACING DIAPHRAGM ASSEMBLY - Diaphragm assembly RRP-96-213 includes disk seal (not shown) installed. Seal not required on nonrelieving models.
7. TO REPLACE O-RING-This o-ring is above a metal washer which cannot be removed. Using a pointed probe of some kind, pull o-ring out. Force new o-ring through washer hole into o-ring cavity.

REPAIR KITS AND REPLACEMENT PARTS

SELF-RELIEVING REPAIR KIT

(includes self-relieving diaphragm assembly, valve assembly and o-rings) RRP-95-130

NON-RELIEVING REPAIR KIT

(includes nonrelieving diaphragm assembly, valve assembly and o-rings) RRP-95-129

Self-Relieving Diaphragm Kit RRP-96-213

Non-Relieving Diaphragm Kit RRP-96-216

Valve Assembly (valve stem, valve spring) RRP-96-215

Regulating Springs:

0-50 psi RRP-95-222

0-125 psi GRP-95-224

0-250 psi RRP-95-218

Adjusting Knob Assembly RRP-95-023

ACCESSORIES

Gauges:

0-60 psig K4520N14060

0-160 psig K4520N14160

0-300 psig K4520N14300

Panel Mount Nut GPA-95-032

Wall Mounting Bracket GPA-95-012

Wall Mounting with Panel Nut GPA-95-011

Wall Mounting Bracket (Combo's) RRP-95-090

Tamper Resistant Kit RRP-95-006

WARNING

**Product rupture can cause serious injury.
Do not connect regulator to bottled gas.
Do not exceed maximum primary pressure rating.**

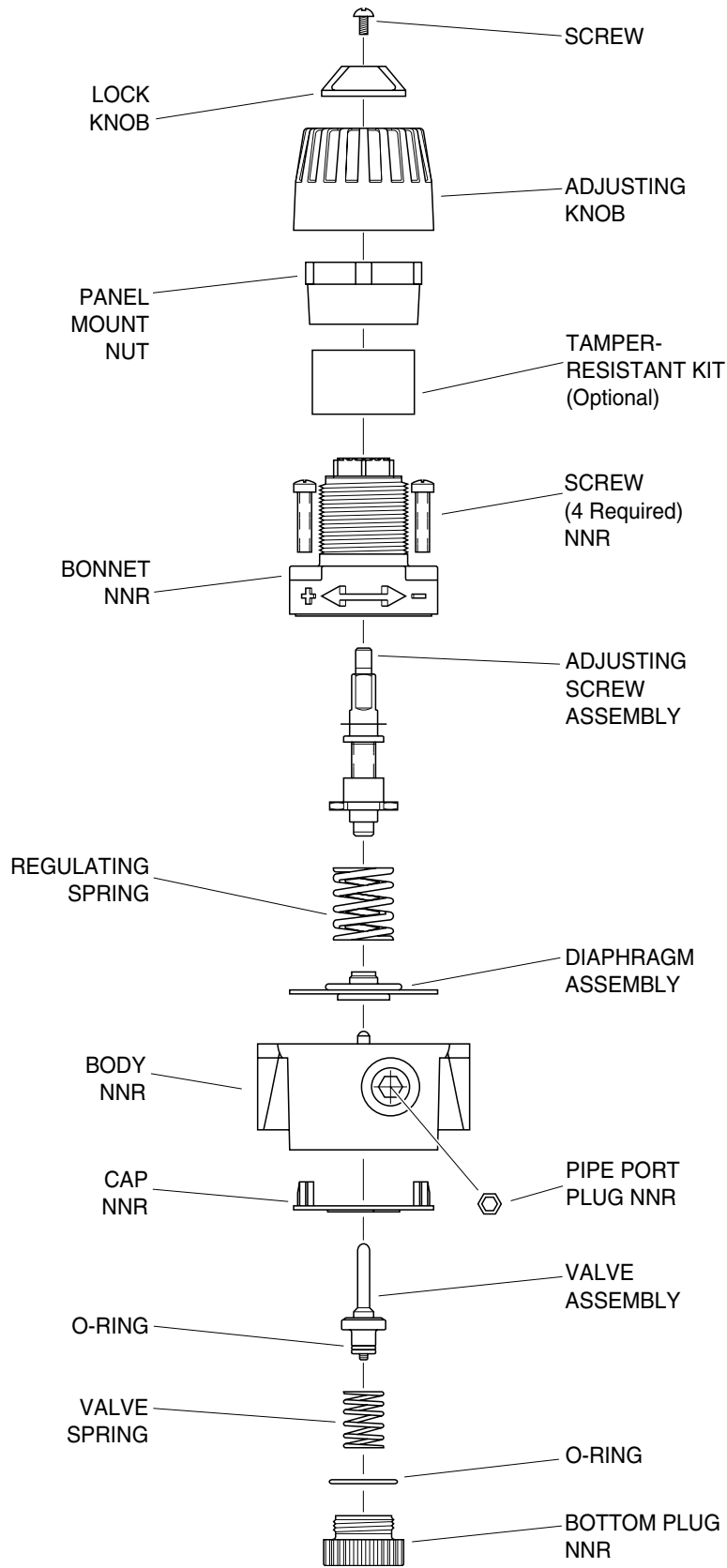
WARNING

FAILURE OR IMPROPER SELECTION OR IMPROPER USE OF THE PRODUCTS AND/OR SYSTEMS DESCRIBED HEREIN OR RELATED ITEMS CAN CAUSE DEATH, PERSONAL INJURY AND PROPERTY DAMAGE.

This document and other information from The Company, its subsidiaries and authorized distributors provide product and/or system options for further investigation by users having technical expertise. It is important that you analyze all aspects of your application, including consequences of any failure and review the information concerning the product or systems in the current product catalog. Due to the variety of operating conditions and applications for these products or systems, the user, through its own analysis and testing, is solely responsible for making the final selection of the products and systems and assuring that all performance, safety and warning requirements of the application are met.

The products described herein, including without limitation, product features, specifications, designs, availability and pricing, are subject to change by The Company and its subsidiaries at any time without notice.

EXTRA COPIES OF THESE INSTRUCTIONS ARE AVAILABLE FOR INCLUSION IN EQUIPMENT / MAINTENANCE MANUALS THAT UTILIZE THESE PRODUCTS. CONTACT YOUR LOCAL REPRESENTATIVE.



NNR=NOT NORMALLY REPLACED